

# INSTRUCTION MANUAL

# STEERING DAMPER KIT

for H-D XL1200/883 ('07~),  
XL1200X FOURTY-EIGHT(~'15)

Thank you for purchasing DAYTONA STEERING DAMPER KIT.

## Product Features

- Stabilizes steering especially at high speed.
- Prevents the front forks from being twisted during high speed cornering.
- Bolt-on mount. The kit includes application specific brackets and all hardware for easy mounting.

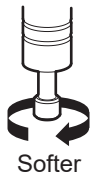


1. Read all instructions before use.
2. After installation, check to see if all the parts are correctly installed, and see if all the screws are torqued properly.
3. Do not adjust the damper while riding.
4. Periodical inspection of the installed parts is required every 500km (300mile). If anything unusual may be found while riding, pull over at a safe place to check.

## Install

\*Install stabilizer on the left side of motorcycle.

Fig.1



Softer

Before installing, turn the adjustable knob counter-clockwise to the end.

## Install FORK BRACKET

1. Attach fork bracket(#2) on the left front fork tube.

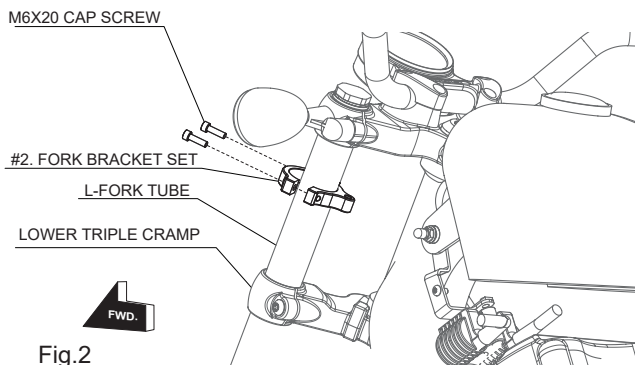


Fig.2

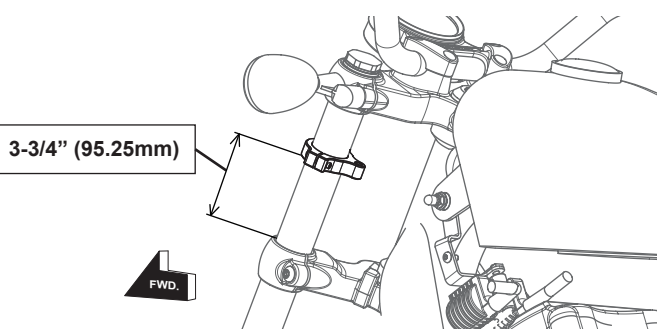


Fig.3

The orientations of brackets for models with different fork pitches are shown below.

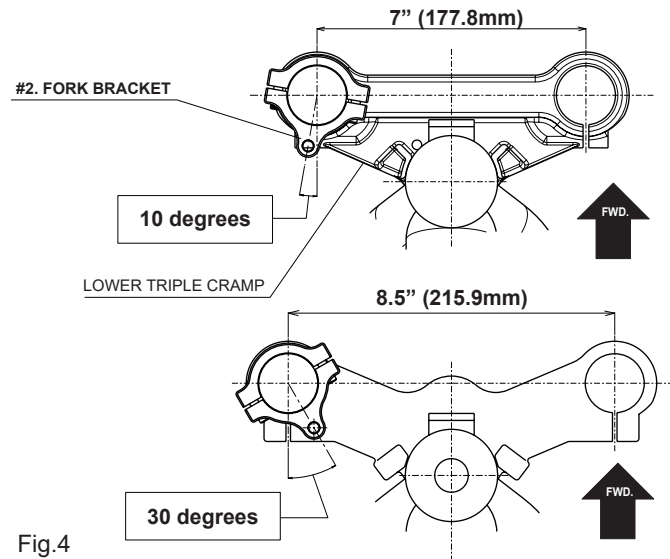


Fig.4

## Install FRAME BRACKET

2. Remove the front side installation bolt of fuel tank.
3. Remove the installation bolt of the ignition coil.
6. Install a supplied frame bracket(#3) over the ignition coil bracket on front side.
7. install a supplied spacer(#4) in backside between ignition coil bracket and ignition coil, and then fix the ignition coil with cap screws(#10).

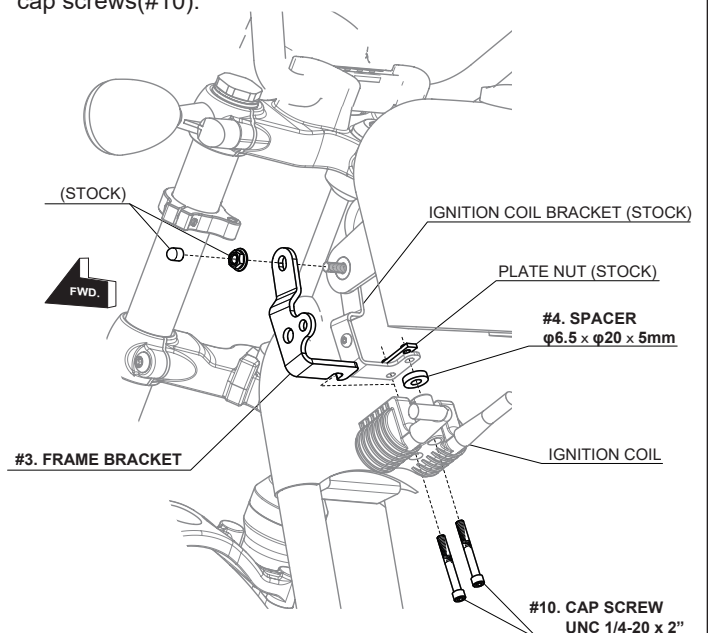


Fig.5

### Install DAMPER BODY

8. Install the DAMPER BODY(#1) with the M8x35 CAP SCREW(#8) and the SPACER(#5).

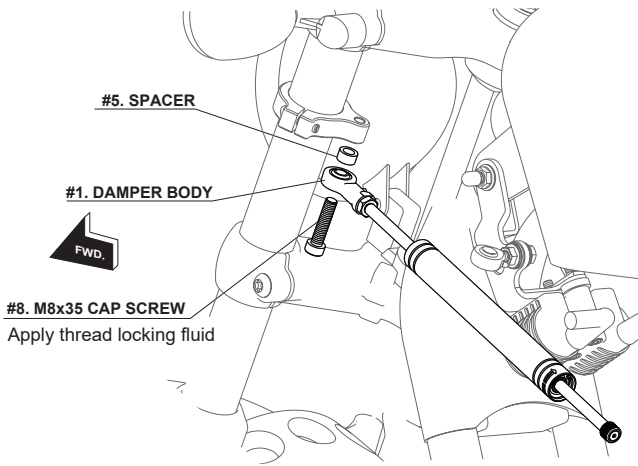


Fig.6

### Install BODY CLAMP

9. Install body clamps as shown below. DO NOT over tighten the damper body clamp. The stabilizer body can be damaged.

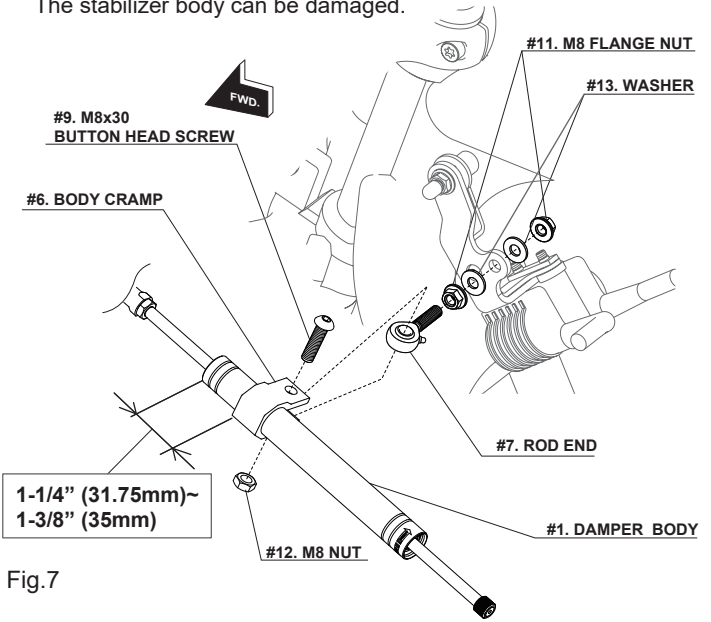


Fig.7

10. Turn the handlebar and check the steering to see if it reaches both right and left steering stoppers completely. Make sure the stabilizer does not hit or rub against the fork tube, frame, engine or the front brake line under the steering stem.

11. Tighten all bolts and nuts after to make sure the installation done right. Then adjust to your desired level of dampening.

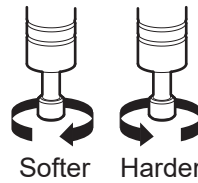
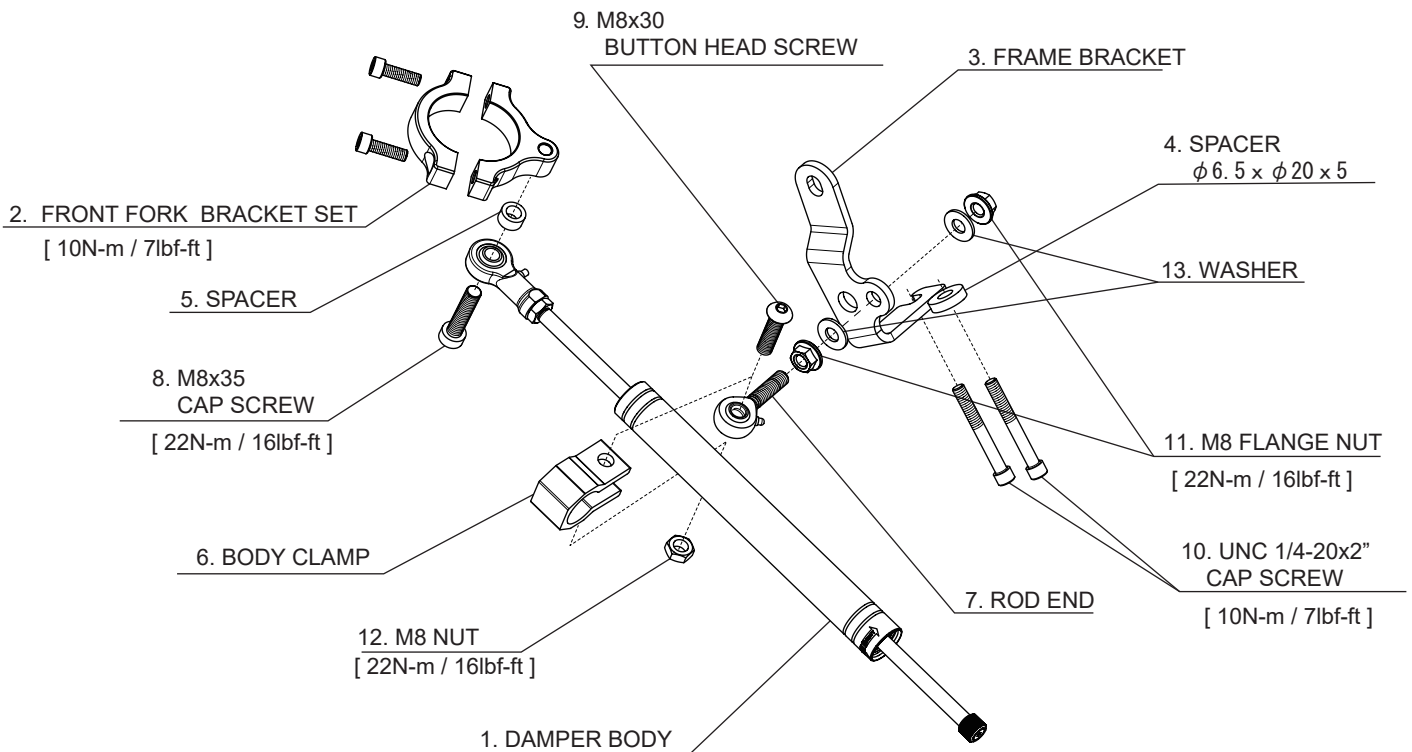


Fig.8

How to adjust the damping force

Turn the adjustable knob clockwise → Harder

Turn the adjustable knob counter-clockwise → Softer



**DAYTONA**

HIGH PERFORMANCE PARTS AND ACCESSORIES FOR ALL MOTORCYCLE LOVERS.  
<http://www.daytona-global.com>