

INSTRUCTION

HIGH VOLUME OIL PUMP

for Harley Davidson XL 1991- 2022

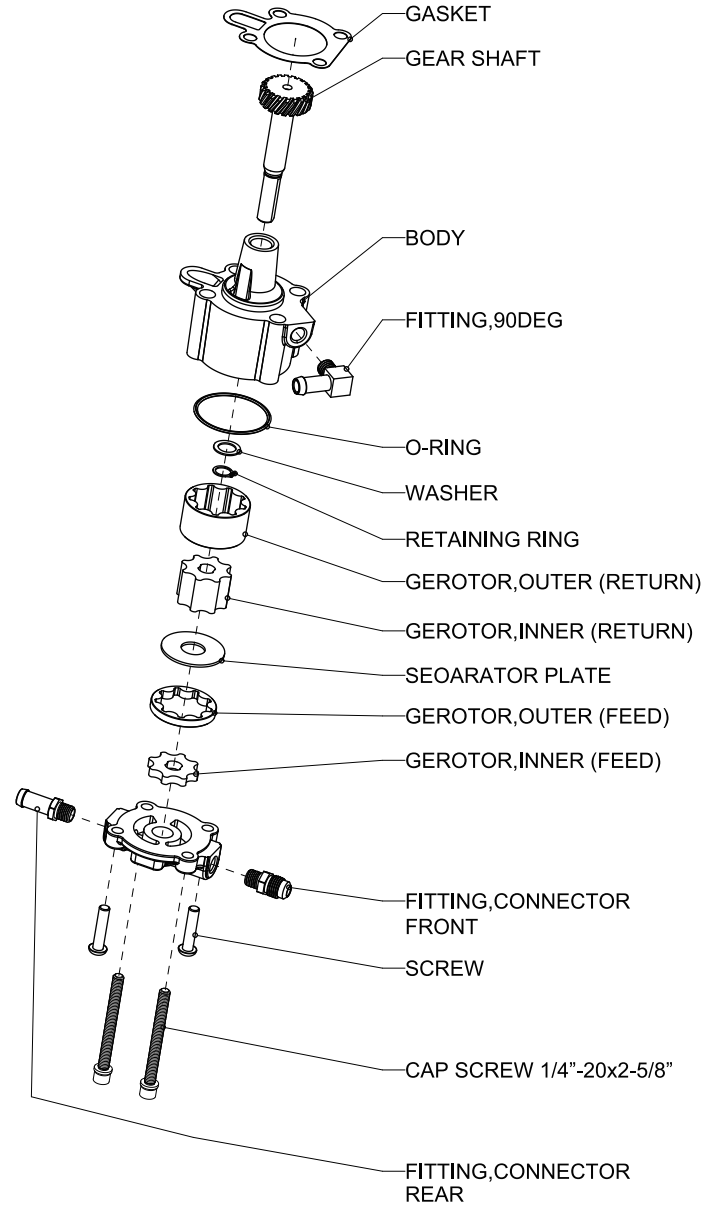
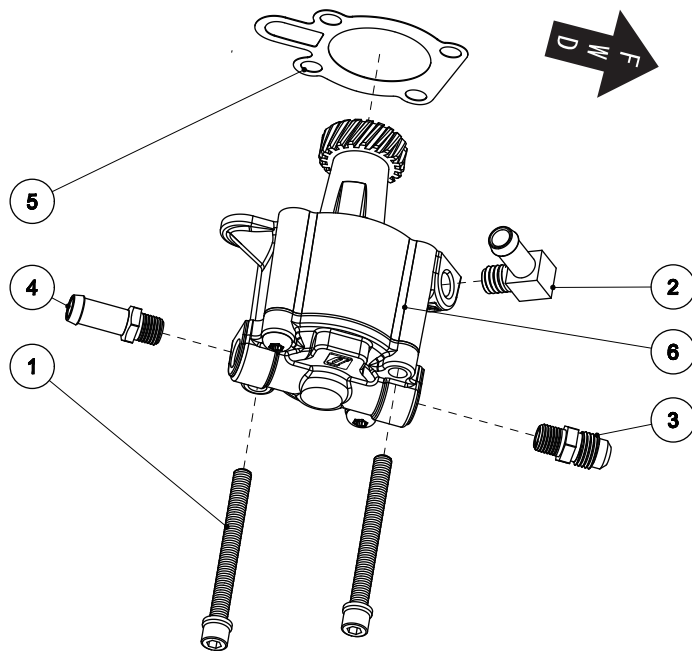
Features

- .Higher volume helps reduce engine and oil temperatures.
- .39mm diameter rotors for maximum performance (std=38mm).
- .110% feed and 115% scavenge volume compared to original equipment XL oil pumps.
- .High-quality die-cast aluminum body construction with a high-strength powder metal gear.



INSTALLATION

- See the service manual for oil pump installation instructions.
- Replace oil pump hose to prevent leaks.
- Use TEFLON PIPE SEALANT or HYLOMAR on fitting threads as necessary.
- CAP BOLT 1/4-20 x 2-5/8 inch.
long mounting screws included in kit are required on 1991-1997 XL models.
This oil pump (which is original equipment on 1998 models) is slightly longer than the 1991-1997 original, equipment oil pump. These 1/4-20 x 2-5/8 inch long screws are original equipment on 1998 and later models.
- The following is for 2000 model-year XL only.
When using this kit on 2000 model-year XL's, remove fitting (P/N 62601-91A) from pump assembly,-and replace it with the fitting provided in this kit.



SERVICE DATA

	POSITION	DESCRIPTION	STANDARD	SERVICE LIMIT
A		Gap between inner rotor and outer rotor	0.0027 - 0.0055 inch	0.0074 inch
			0.07-0.14 mm	0.19 mm
B		Clearance between outer rotor and oil pump housing	0.0047 - 0.0086 inch	0.0141 inch
			0.12-0.22 mm	0.36 mm

No.	PART NAME	QTY
1	CAP SCREW 1/4"-20x2-5/8"	2
2	FITTING, 90DEG	1
3	FITTING, CONNECTOR FRONT	1
4	FITTING, CONNECTOR REAR	1
5	GASKET	1
6	OIL PUMP ASSEMBLY	1