

INSTRUCTION

BIG BORE CYLINDER SET / 4.25 in
for HD Milwaukee Eight - 107Ci

This BIG BORE and BIG FIN cylinder fits the M8 107Ci engine with WISECO piston kit 4.25". No crankcase machining required for installation. The front and rear cylinders are different and marked for proper positioning. Piston kits and gasket sets are not included.

ITEM	SPECIFICATION	
BORE	4.25 in	107.95 mm
STROKE	4.375 in	111.13mm
DISPLACEMENT	124.2 ci	2034.8 cc



Caution :

- COMPETITION USE ONLY.
- To prevent accidental vehicle start-up, which could cause death or serious injury, remove main fuse before proceeding.
- This instruction sheet refers to service manual information and the parts catalog.
- A service manual for your year/model motorcycle is required for this installation.
- Wash and dry with compressed air before assembling the cylinder.
- New Piston Kit, gaskets and O-rings are required.
- It is the engine builder's responsibility to check and verify all clearances before assembly including piston to wall clearance and piston ring end gap. All components must be thoroughly cleaned prior to final assembly.

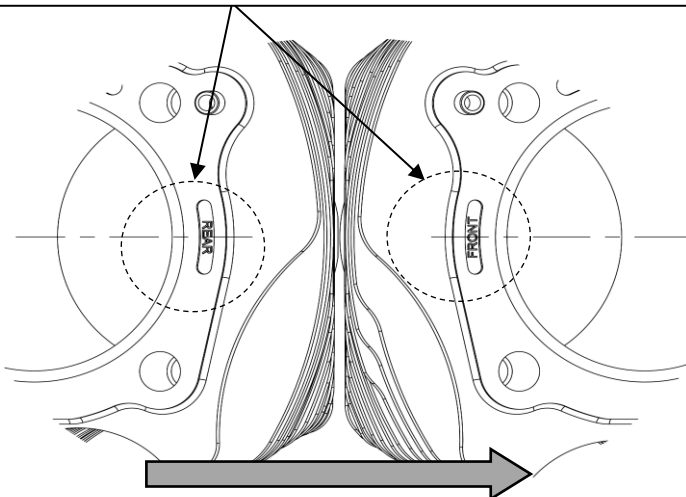
Warning :

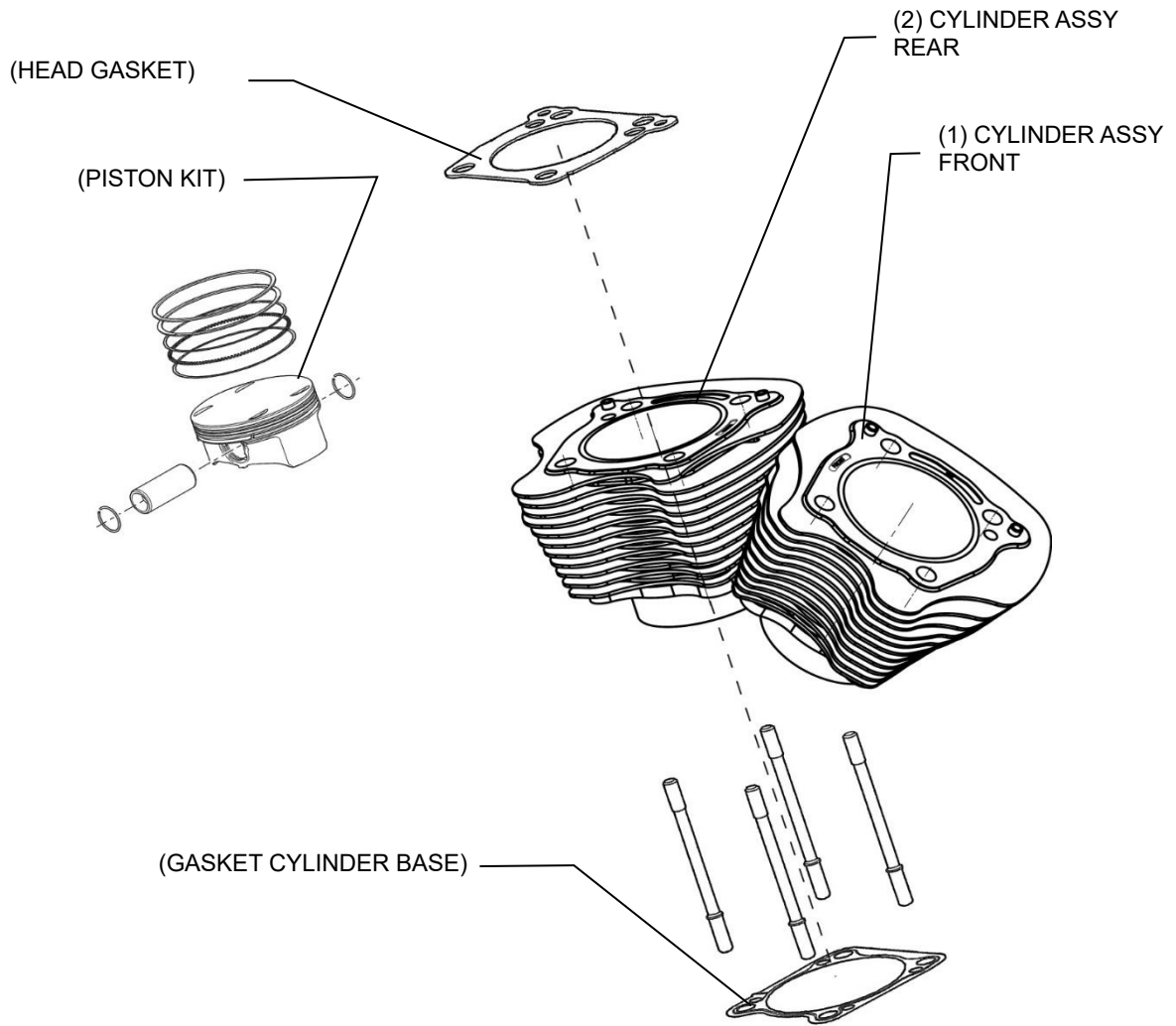
- Set piston to cylinder wall clearance to the piston manufacturers instructions before installation.
- On initial start up it is important to heat cycle the engine at least twice.

Fits with WISECO Piston kit / No.# K2787 *(The following parts are not included. Must be purchased separately.)

	DESCRIPTION	QTY	CID	BORE
WISECO	PISTON KIT	K2787	124cid	4.250"
	Head & Gasket set	W6984	for 124cid	4.250"

• Position the "FRONT" and "REAR" markings towards the center of the cylinder v bank.





No.	PART NAME	QTY
1	CYLINDER ASSY FRONT / with DOWEL PIN	1
2	CYLINDER ASSY REAR / with DOWEL PIN	1

• The rear cylinder has been machined to avoid cylinder liner contact.

