

# How to convert a decompression-incompatible 150cc 4valve to decompression system .



## ① Please place the camshaft as shown in the image.

※the camshaft in this picture is with-decomp camshaft.

Red line : Top of cam place diagonal line.

Yellow line : Two screw hole are slanted like this picture,

## ② Please check the yellow line. Is the yellow line slanted?

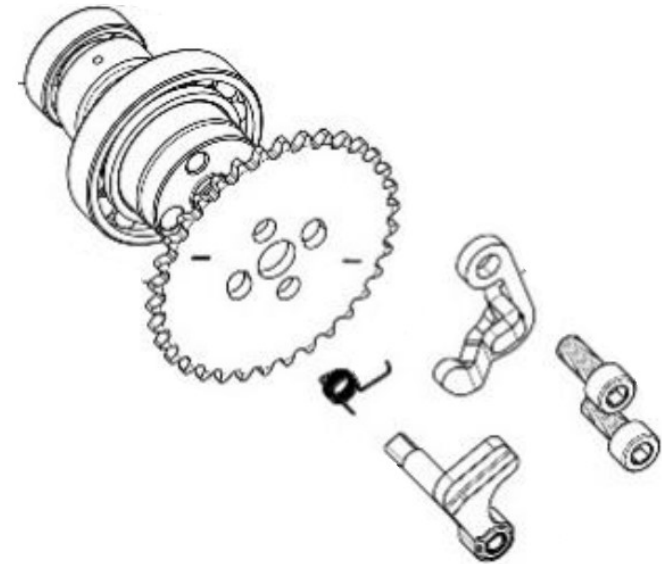
YES, Yellow line is slanted.

→ you don't need to buy #87163 camshaft.

Please prepare other components.

NO, Yellow line is horizontal.

→ you can convert to decompression system with all of components listed on the right.



x1	#87163 CAMSHAFT COMP. 150CC
x1	#86879 SPROCKET, CAMSHAFT DRIVEN
x1	#87621 SPRING, RETURN DECOMP
x1	#87620 PLATE, STOPER DECOMP
x1	#89681 SHAFT W/WEIGHT DECOMP
x2	#86883 SCREW M6x16