

# INSTRUCTION

## ***STEERING DAMPER KIT*** for Harley Davidson RH1250S

Thank you for purchasing DAYTONA STEERING DAMPER KIT.

### Product features

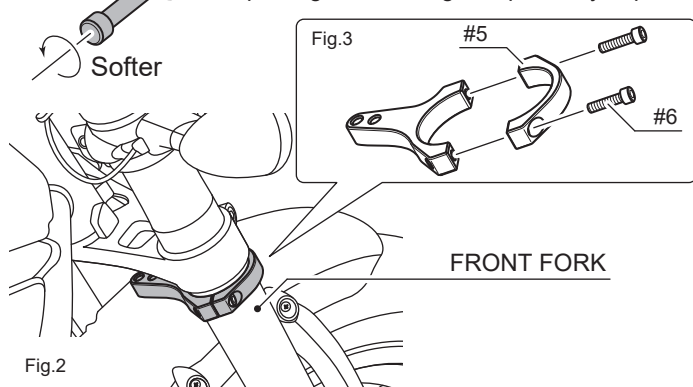
- Stabilizes steering especially at high speed.
- Prevents the front forks from being twisted at high speed cornering.
- Bolt-on mount. The kit comes with complete bracket kit for easy mounting.



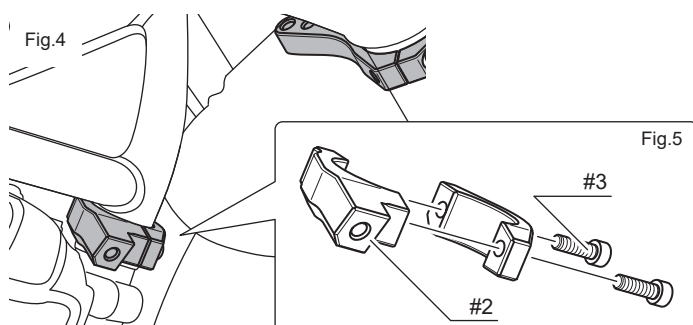
1. Read all instructions before use.
2. After installation, check to see if all the parts are correctly installed, and see if all the screws are torqued properly.
3. Periodical inspection of the installed parts is required every 500km (300mile). If anything unusual may be found while driving, pull over at a safe place to check.

### Install

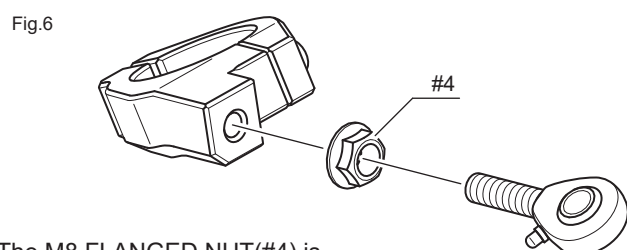
Fig.1 Turn loosen the adjustable knob counter-clockwise to the end before placing the steering damper body in place.



Place the FRONT FORK BRACKET(#5) on the right side under the triple tree.

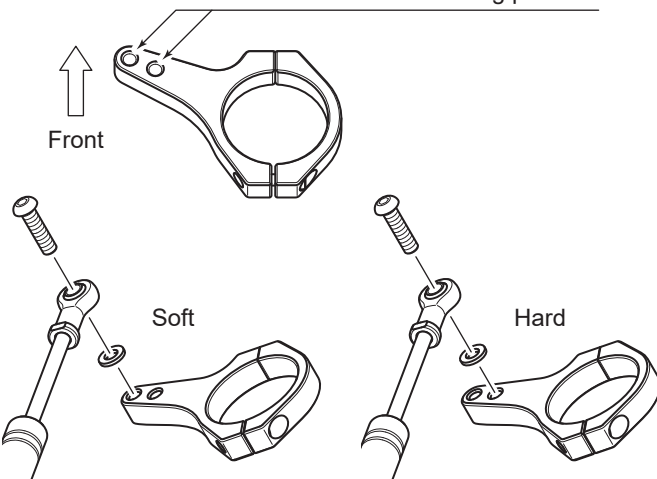


Install the FRAME BRACKET(#2) on the right side of the frame down tube.

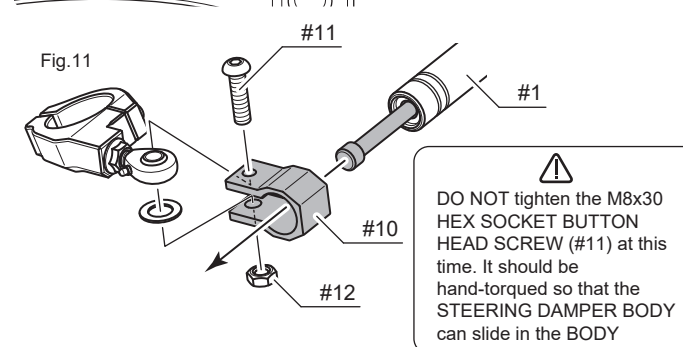
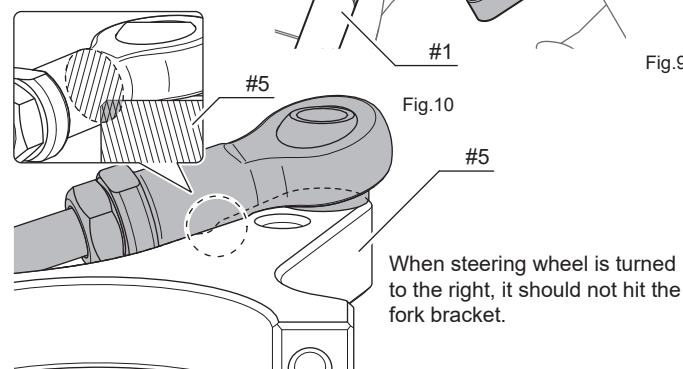
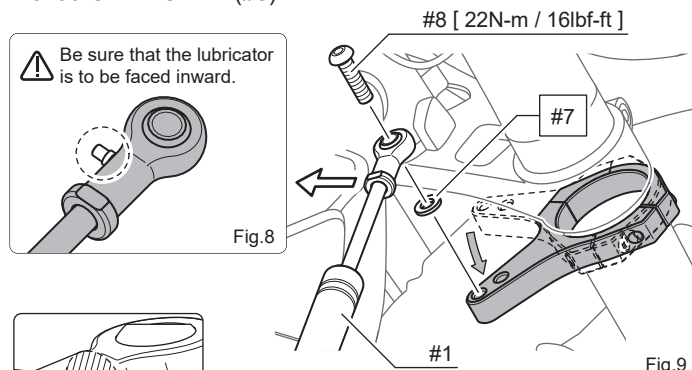


The M8 FLANGED NUT(#4) is to be hand-torqued at this time.

Fig.7 Select the mounting position



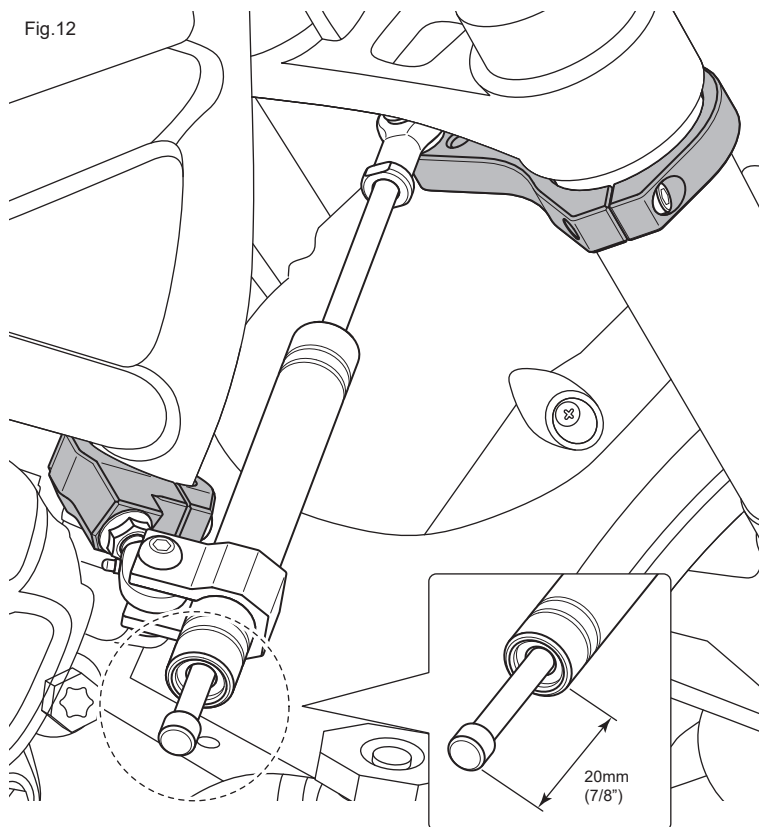
Shift the fork bracket (#5) as per the Fig.9. Install the DAMPER BODY(#1) with the SPACER(#7) and M8x35 CAP SCREW(#8).



**⚠ DO NOT** tighten the M8x30 HEX SOCKET BUTTON HEAD SCREW (#11) at this time. It should be hand-torqued so that the STEERING DAMPER BODY can slide in the BODY

Have the BODY CLAMP(#10) and slide it onto the STEERING DAMPER BODY(#1). Attach the BODY CLAMP(#10) onto the FRAME BRACKET(#2) as per the Fig.10.

Fig.12



To adjust the steering damper location, slowly turn the steering to the left end, and then side the STEERING DAMPER BODY(#1) so that the distance between the knob and the damper tube become approx 20mm(7/8").

To fix the steering damper body in place, torque the M8 NUT(#12) at [ 22N-m / 16lbf-ft ].

See Fig.6 on the left.

Torque the M8 FLANGE NUT(#4) at [ 22N-m / 16lbf-ft ]. Be sure the outer race of the ROD END(#9) must NOT touch the BODY CLAMP(#10) at any steering angle. The steering damper and/or the brackets may be damaged, otherwise.

Before riding, be sure the steering is turned to the right and the left without any interference.

Adjust the damper strength to your favorite position with the adjustable knob.

