

INSTRUCTION

STEERING DAMPER KIT for Harley Davidson FXLRS 2020-

Thank you for purchasing DAYTONA STEERING DAMPER KIT.

Product features

- Stabilizes steering especially at high speed.
- Prevents the front forks from being twisted during high speed cornering.
- Bolt-on mount. The kit comes with complete bracket kit for easy mounting.

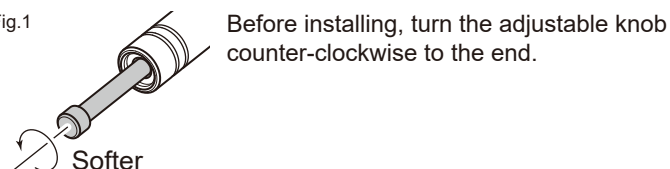


1. Read all instructions before use.
2. After installation, check to see if all the parts are correctly installed, and see if all the screws are torqued properly.
3. Do not adjust the damper while riding
4. Periodical inspection of the installed parts is required every 500km (300mile). If anything unusual may be found while riding, pull over at a safe place to check.

Install

※Install stabilizer on the left side of motorcycle.

Fig.1



Install FORK BRACKET

1. Attach fork bracket (#2) on the left front fork tube.

Fig.2

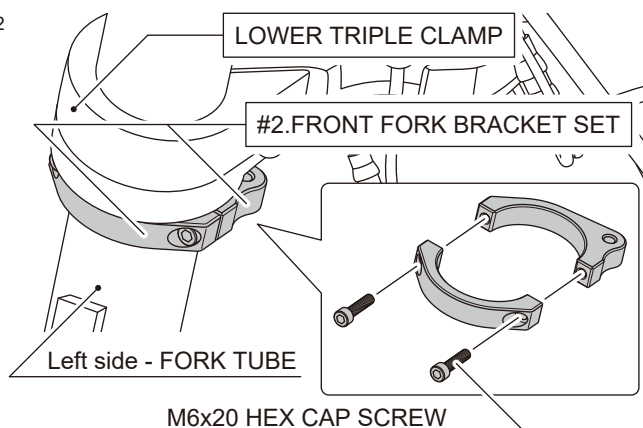
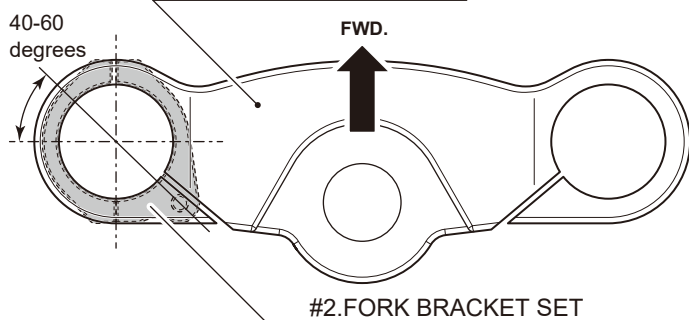


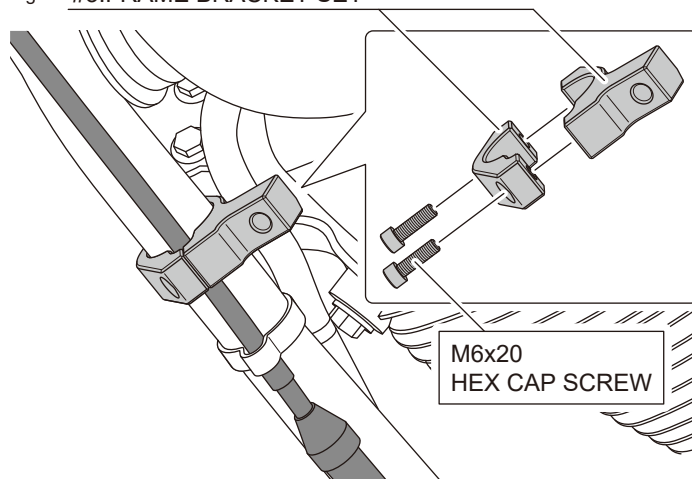
Fig.3



Install FRAME BRACKET

2. Attach frame bracket (#3) on the left side frame down tube.

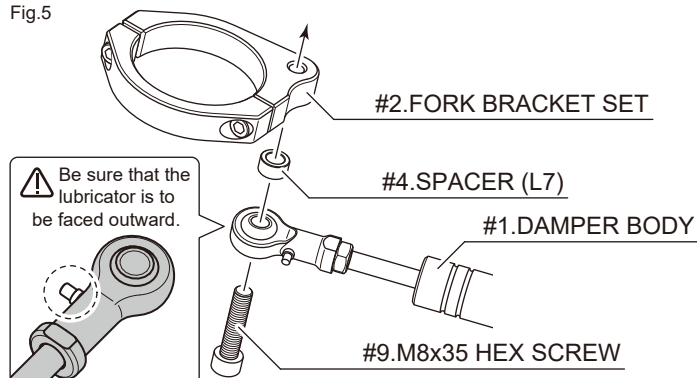
Fig.4 #3.FRAME BRACKET SET



Install DAMPER BODY

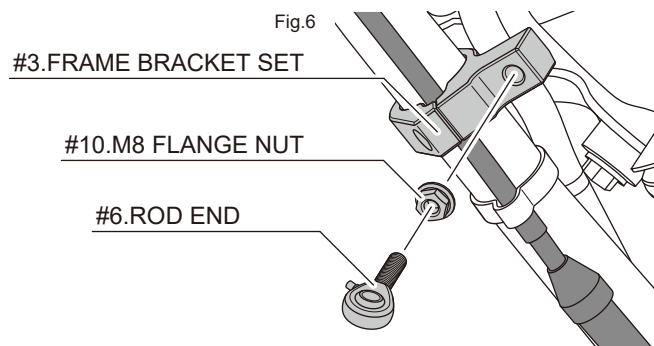
3. Install the DAMPER BODY (#1) with the M8x35 HEX SCREW and the SPACER(L7).

Fig.5



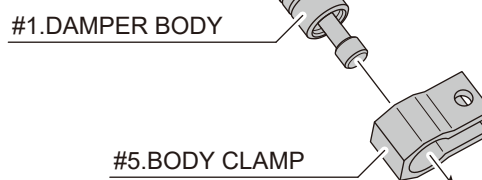
4. Install the ROD END (#6) with the M8 FLANGE NUT (#10).

Fig.6



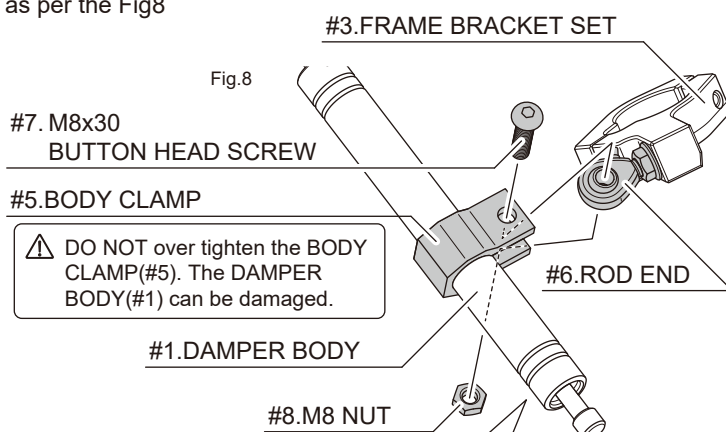
5. Have the BODY CLAMP(#5) and slide it onto the DAMPER BODY(#1).

Fig.7

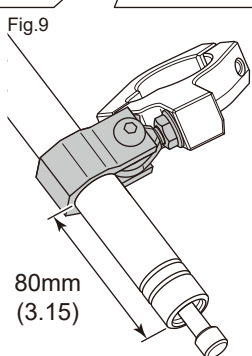


Install DAMPER BODY

6. Attach the BODY CLAMP(#5) onto the FRAME BRACKET SET(#3) as per the Fig8



Adjust the DAMPER BODY(#1) position.(see Fig.9)
Make sure DAMPER BODY(#1) doesn't hit any part of motorcycle when turning the handlebar to the leftmost and rightmost position.



****Each motorcycle has different tolerance.**

Therefore, different combination of the fork bracket angle and the body clamp may be necessary within small range instead of indicated positions by the diagrams.
Adjust the bracket and the body clamp to the set stabilizer on the best position if necessary.

Turn the handlebar and check the steering to see if it reaches both right and left steering stoppers completely.
Make sure the stabilizer does not hit or rub against the fork tube, frame, engine or the front brake line under the steering stem.

Tighten all bolts and nuts after to make sure the installation done right.
Then adjust to your desired level of damping.

How to adjust the damping force

Turn the adjustable knob counter-clockwise → Softer

Turn the adjustable knob clockwise → Harder

Fig.10

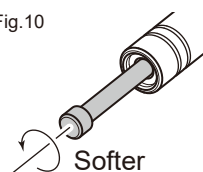


Fig.11

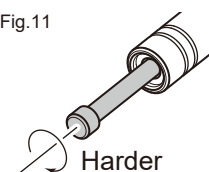


Fig.12

